

eGuide

The Ultimate Guide in Choosing the Right Mobile Integration Solution



appdome

The Ultimate Guide in

Choosing the Right Mobile Integration Solution

In today's digital age, organizations need to deliver integrated mobile apps fast (as in mobile speed) and ensure that they work as they are intended for better workflows, usability and user experience. It will in turn help drive end-user adoption and usage, leading to increased productivity and efficiency.

This guide highlights the tips when choosing a mobile integration solution that will meet the goals of your mobility strategy, shorten your time to market as well as leverage your mobile developer resources in the most efficient way possible.

Consideration #1

Integration time

How quickly can a third-party service be integrated with your mobile app? It might take months of development effort for mobile app developers to work with a software development kit (SDK) from scratch. For example, an enterprise mobility management (EMM) SDK usually requires months and source code modification to implement.

Integrations can be very time-consuming. Not to mention that, prior to integrating an app to an SDK, the mobile app developer must locate, read and understand the SDK and documentation. If multiple apps are being integrated with various SDKs in parallel, the integration timeframe will be increased.

Consideration #2

App developer resources

If SDKs could be seamlessly integrated into mobile apps without requiring development cycles or coding, it would free up development resources and significantly reduce the ongoing code maintenance burden. Mobile app developers would then be able to devote their valuable time to work on higher value projects such as creating new mobile apps and adding new features.

Avoid complex coding efforts for app integrations. Preserve your high value development resources and empower other employees such as IT, product management, or security teams to complete integration tasks. Better resource allocation is the key to efficiently run and deliver the best mobile apps to your users.



Consideration #3

Cross-platform, multi-framework compatibility

Ever since the bring-your-own-device (BYOD) trend, it is now quite rare to find an organization that focuses its mobilization efforts on a single OS platform such as going all iOS or Android. Supporting more than one mobile platform is table-stakes, doubling the effort, time, and cost. Different platforms require a completely different set of resources across the board.

Even if you do have the resources to pull off cross-platform support, look for technologies that can bridge the gap between the significant differences in functionality across platforms. Mobile app developers often need to work hard to bring feature-parity across platforms that they support. Choose platforms and SDKs designed for different OS and frameworks so the workload isn't impossible.



Consideration #4

The third-party app

One of the biggest considerations is bring your own apps (BYOA). Employees bring in mobile apps they want, when they want to, and your mobile developers do not have access to source code.

In turn, BYOA adds to the type of frameworks your organization has to contend with. Frameworks like Ionic and Cordova show up. It is not surprising to know that organizations usually do not have or get access to the SDKs from mobile vendors (like EMMs). Even if they do have the SDKs, implementations are usually outdated and updating them will take a while.

Determining how to integrate mobile apps that you don't have source code access and on frameworks you don't use or support is tough. Modern IT organizations look for technology that brings a “multiplier effect”, allowing them to implement SDKs and mobile services across more apps than ever before.



Consideration #5

Optimized development and release cycles

Every app developed has multiple developments and release cycles. Businesses need to optimize this work. A solution that will allow “templatized” rule sets and reusable common implementations and configurations are critical to staying ahead.

Don't reinvent the wheel with every release. Leverage modern or advanced workflow, delegation and collaboration rules to empower mobile teams to work together to complete implementation or integration projects in the most efficient manner. Avoid brittle one-off implementations that need to be reworked with every app, OS, and SDK release.

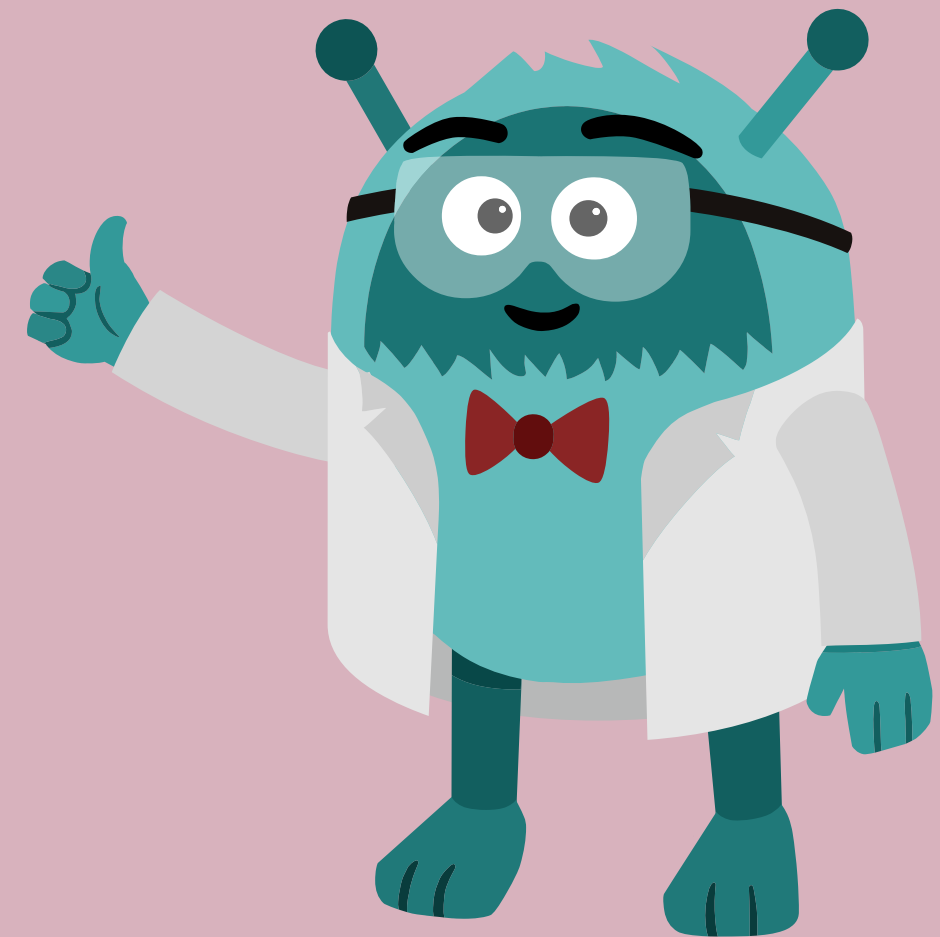
get started at fusion.appdome.com

Consideration #6

Unchanged app behavior

While integrating an app with SDKs or third-party services, it is vital that the app has all the intended features and functionalities before and after the integration. Although corporate apps are created for the employee in mind, the employee will only use them if they aid in work productivity and are fun to use. If an app “breaks” after an integration or if it is missing functionalities that employees need, they will stop using the app. The same rule holds true if the app’s performance degrades significantly or if it is slow to respond.

get started at fusion.appdome.com



Consideration #7

Compliance, management, and deployment of app

It goes without saying that mobile apps need to be in compliance with the organization's policies and allow proper management and deployment before they can go into the hands of end-users. This applies to integrated apps too. Apps that are integrated with other apps or services need to be baked with the desired security and give organizations the full visibility and auditability to keep them in compliance with internal or external regulatory or governance requirements, especially in environments dealing with highly sensitive data.



Why Appdome?

In today's digitally transformative world, the most productive companies are the ones who leverage mobility to scale. They are the ones who are progressive in giving employees the autonomy to choose their devices, apps, and processes to be productive, yet know how to empower internal resources like app developers, IT, and others to create and deploy mobile apps quickly and efficiently.

At Appdome, we believe mobile app integrations are done best by automated, simplified and secure technology that can easily span frameworks and platforms to spearhead digital transformation now and in the future.



get started at fusion.appdome.com

appdome

Fuse an app at
fusion.appdome.com

3 Twin Dolphin Drive
Suite 375
Redwood City, CA 94065

+1.650.567.6100
+1.844.360.FUSE (3873)
info@appdome.com

www.appdome.com